



# Organization Snapshot

Your donation allows us to build stronger communities by improving peoples' lives.

## Green Mountain United Way unites around the health, education, and financial mobility of every person in every community we serve.

We work to increase the organized capacity for people to care for one another. We seek to improve the overall quality of life in the communities we serve.

### Our work is gritty and complex; it's also extremely rewarding, like the story below:



**Name:** M. **Age:** 29 years

**Occupation:** Nursing student

**Services Needed:** Catching up on student loans and rent, food assistance, budgeting, listening support

“ I’m so sick of being told I’m doing all the right things. ”

**M., 29 years old**

M. came to us at the end of her rope. She was several months into a nursing certification program with her employer, and the pay while she was enrolled in the program was only \$17 per hour. Despite working full time, while also being enrolled in an educational program that was meant to advance her career, **she couldn't afford her basic needs**. She was behind on **rent** and facing eviction; behind on **school loan** payments; and living with a lot of **anxiety** because, as a single mother, she often struggled to feed her young son and herself. She felt she had exhausted all of her options, and none of it was working.

Thankfully, M.'s employer was partnered with **Green Mountain United Way's Working Bridges program**, so she was able to be connected to assistance programs and receive financial counseling and support services during and after work. Resource coordinator Blaire met with M., and after hearing her story, told her, "It sounds like you're doing all the right things." To which M., who was frustrated by all the dead ends she had encountered on her own, responded, "I'm so sick of hearing that."

Blaire understood M.'s frustration, and worked with her to make a plan. First, Blaire used **Green Mountain United Way's 185 Fund** to provide M. with weekly **grocery** and **gas** cards, to help her afford food and gas, while also freeing up money in her budget to tackle other problems. Next, with Blaire's support, M. was able to make one small payment to bring her **school loans current**, and then they put her school loans into deferment for a 6-month period, so that M. could get caught up **without the stress** of that bill hanging over her head. Next, they found a **housing assistance program** that paid a portion of M.'s overdue rent, and worked together to make a plan to pay a little extra each month to get her caught up; M. presented the plan to her landlord, and they made an agreement. Once M.'s immediate needs were taken care of, Blaire and M. worked together to make a weekly budget that would keep M. on track.

Now, M. **has a plan** and feels much better about things. She and her son are able to afford regular meals, her living situation feels stable, and she can see a path forward. Thanks to Green Mountain United Way's Working Bridges program, she faced financial crisis head on, and was able to achieve **financial mobility**.



Green Mountain  
United Way



# Organization Snapshot

Your donation allows us to build stronger communities by improving peoples' lives.

## OUR WORK

### Working Bridges

Vermont's hardworking families and individuals are struggling to make ends meet. Thankfully, over 30 employers in northern Vermont have partnered with **Working Bridges**, giving their employees access to basic needs support and financial mobility. Our resource coordinators offer confidential one-on-one support to move people out of financial struggle and toward personal stability and financial mobility.



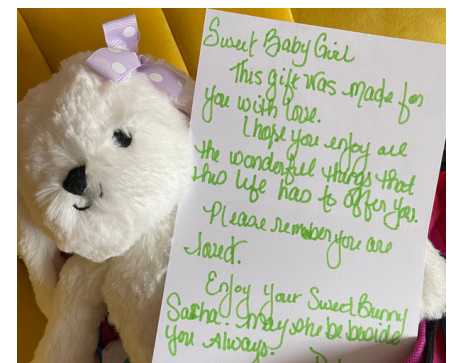
### 185 Fund

So many Vermonters are just one unexpected bill away from financial crisis. Despite working full time, many are unable to afford basic needs and make ends meet. When financial emergencies strike, **Green Mountain United Way's 185 Fund** is available to offer small-dollar assistance, often in the form of grocery and gas cards. They bring immediate relief, and free up money to address other needs, when no other support is available.



### Tatum's Totes

Every day, Vermont children enter foster care, often in an emergency situation. These children are told to grab their things and go, many times with items stuffed into a garbage bag. **Tatum's Totes** was created to help make this transition easier by providing a backpack filled with essentials and comfort items. We organize holiday donations as well, so that foster kids can get the items on their wish lists. For youth leaving foster care, we offer financial literacy training to help guide them toward a strong financial future, despite having a rough start.



### K.E.E.P. Financial Coaching

Using a train-the-trainer model, this program supports financial coaches who can in turn work with their clients to improve their lives. Financial coaching is an emerging practice that helps clients learn to set and achieve their financial goals through learned behavior changes built on the trusted relationship between coach and client.





# Organization Snapshot

Your donation allows us to build stronger communities by improving peoples' lives.

## OUR WORK

### Community Caring

Through ongoing partnerships with other local nonprofit organizations, government agencies, faith-based groups and local businesses, Green Mountain United Way seeks to help **meet the basic needs of the residents** in its service area. Those needs include, but are not limited to, food, heating assistance, prescription drug discounts, opportunities for volunteerism, and connection to available resources.



### Flood Relief

In the early days after the July 2023 floods in central and northeastern Vermont, Green Mountain United Way staff were on the ground connecting people and communities with the resources they desperately needed. We immediately launched a **Flood Disaster Relief Fund** that raised more than \$55,000 from 71 individual donors and two foundations. Going forward, our **flood relief** response has included using our strong partnerships and collaborative networks to leverage resources toward solving the community problems that were created or exacerbated by the flood, including housing, food instability, and benefits cliff.



### Two-Generation Financial Literacy

Our approach to money, and our emotions around it, are often learned behaviors passed across generations. To help break the cycles that keep families in poverty, Green Mountain Way has developed a set of resources and trainings directed toward youth to teach them good financial concepts, open to any family member of a Working Bridges client. This **Two-Generational Financial Literacy** training means that families can work together to move toward personal stability and financial mobility.







# Organization Snapshot

Your donation allows us to build stronger communities by improving peoples' lives.

## The People We Serve

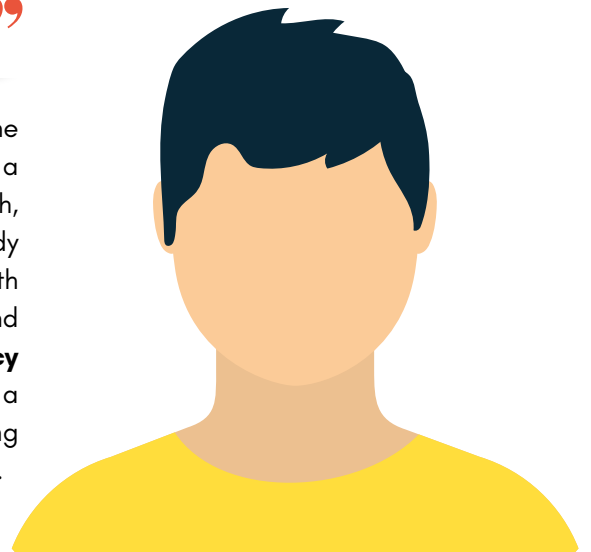
“ Sometimes it's just really good to have someone to talk to. ”  
J., 37 years old



J. was working hard at his full-time job, and his effort was recognized with a \$1/hour raise. However, this increase in pay put him just \$37 over the income limit for food assistance. A raise that amounted to about \$2,000 per year would cost him \$12,000 in lost food benefits for him and his two kids. He could have turned down the raise or used credit cards to buy food, but instead he worked with a resource coordinator who was able to use our **185 Fund** to get grocery cards and a weekly share of local, organic meat, vegetables, cheese, and eggs.

“ Now I don't have to live in my car. ”  
D., 17 years old

At age 11, Devon was suddenly moved to emergency foster care, and all he could bring was his phone, sneakers, and a sweatshirt. He was given a backpack from **Tatum's Totes** with essential items like a toothbrush, socks, and water bottle, plus comfort items including books and a teddy bear. At age 17, he left foster care for a technical career program. With limited resources, he didn't know how he was going to pay for school and was planning to live in his car. Our **Two-Generational Financial Literacy program** helped him make a plan to pay for school, afford housing, start a savings account, and start to build credit. Now Devon is ready for a strong financial future, despite having a rough early start.



“ For the first time, I am financially independent. ”  
S., 52 years old

S. was a New American sending money home to her family in another country. She did not have her own assets, and was receiving rides to and from work. She worked with a **Working Bridges** resource coordinator to build credit and apply for a small car loan, so that she was able to buy an affordable, reliable car. Now, at 52 years old, S. is financially independent for the first time.



Green Mountain  
United Way



# Organization Snapshot

Your donation allows us to build stronger communities by improving peoples' lives.

## Our Impact

### Working Bridges



Individuals Served  
**314**



Services Provided  
**1,060**

#### Top 3 Services Provided



Financial  
Mobility Services



Food &  
Nutrition



Personal  
Wellness

### Employer Partners

- BlueCross & BlueShield of Vermont
- Central Vermont Home Health and Hospice
- Central Vermont Medical Center
- Darn Tough Vermont
- Northern Counties Health Care
- Northern Vermont Regional Hospital
- Vermont Creamery
- The Vermont Foodbank
- Vermont Mutual Insurance
- Weidmann Electrical Manufacturing

### Tatum's Totes



Children Served: 275+

### K.E.E.P. Coaching

Trained Coaches: 120

### 185 Fund



People Served: 109



Primary Area of Need:  
Grocery Budget

### VTShares Workplace Giving



1,043 Employees  
(2022)



121 Nonprofits



\$271.84 Average Gift



\$283,565 Donated (2022)



# LIVE UNITED



Green Mountain  
United Way



# Organization Snapshot

Your donation allows us to build stronger communities by improving peoples' lives.

## Strategic Partnerships

GMUW is a leader in creating **collaborative opportunities for collective impact initiatives**. This means building and being part of a network of community members, organizations, and institutions who advance equity by learning together, aligning, and integrating their actions and resources **to achieve population and systems-level change for good**. We continue to use this powerful network of collaborative shared leadership in addressing social determinants of health, which has a major impact on people's health, well-being, and quality of life. This includes collaborative approaches to ensure all people have equitable access to stable housing, food, financial resources, mental and physical health care, education, healthy environments, and the opportunity to define their individual purpose and goals in life.



## OUR PARTNERS

Central Vermont Medical Center | Central Vermont Home, Health & Hospice | Vermont Foodbank | Vermont Department of Health | Good Samaritan Haven | Capstone Community Action | Northeast Kingdom Community Action | Northeast Kingdom Human Services | Northern Counties Healthcare | Northeast Vermont Regional Hospital | Umbrella | Rural Edge | Downstreet Properties | United Ways of Vermont | Department for Children and Families, Northeast Kingdom, Lamoille, and Barre Districts | Federal Reserve Bank of Boston | Vermont Community Foundation | National Life Foundation | Vermont Women's Fund | Good Will of Northern New England | Central Vermont Regional Planning Commission | FINRA | Elevate Youth Services | North Country Federal Credit Union | Vermont Works for Women | Barre UP! | Central Vermont Economic Development Corporation | Family Center of Washington County | State of Vermont | City of Montpelier | City of Barre | Towns of Plainfield, Marshfield, Woodbury, Cabot, and Hardwick | Queen City Saints | The Civic Standard | US Department of Agriculture | Federal Emergency Management Agency | Everyone Eats | Vermont Gas | United Way Worldwide | Hickock & Boardman | Agency of Human Services | Peoples' Health and Wellness Clinic | NEK Council on Aging | Rural Community Rides | Blue Cross and Blue Shield of Vermont | Northfield Savings Bank | Vermont Mutual | Union Mutual of Vermont | Recovery Vermont | Central Vermont Prevention Coalition | Vermont Parks Forever | First Congregational Church of Berlin | THRIVE | NEK Prosper! | Washington County Hunger Council | Vermont Health Equity Partnership | Spaulding High School | Community Rides Vermont | Working Communities Challenge | Vermont Council on Rural Development | Let's Grow Kids



Green Mountain  
United Way



# FLOOD RESPONSE



Green Mountain United Way



Green Mountain United Way mobilized volunteers and community partners to meet the critical need for essential supplies and resources needed in our rural communities.

48

Flood Impacted Individuals Directly Supported by GMUW Resource Coordinators

80 Goodwill Vouchers Distributed

\$6,000

worth of \$100 grocery gift cards, given directly to individuals impacted by flood damage

Queen City Saints Volunteers and GMUW's Tawnya Kristen



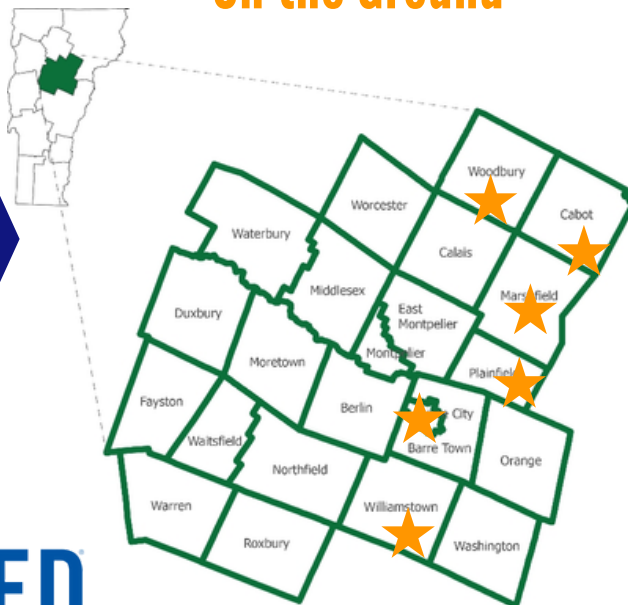
## PHASE 1

Rapid response to assess and support hard hit rural towns was our primary focus for the first weeks. GMUW was on the ground connecting with local leaders to bring essential supplies to Marshfield, Plainfield, Cabot, Woodbury, and Hardwick.

12+

Large scale deliveries of critical supplies to local community hub centers in support of impacted residential neighborhoods.

## On the Ground



LIVE UNITED

WANT TO HELP?

LEARN MORE OR DONATE HERE:





# UNITED IN PARTNERSHIPS

Mobilizing our existing partnerships and establishing connections with local rural hub sites allowed GMUW to help those in need immediately. Connecting those who want to help, to those who need help is a primary role that GMUW is proud to play.



### Damaged general stores still center of community

On a recent Saturday afternoon, Randy Hough, of Cabot, sat at one of the tables toward the front of Harry's Hardware and The Den in his hometown.

Times Argus / Sarah Galbraith, Director of Communications at GMUW

## Phase 1 Partners

- Woodbury/Calais Food Shelf
- Plainfield Emergency Management
- Town of Marshfield, Village Store
- The Civic Standard (Hardwick)
- Central Vermont Medical Center
- Queen City Saints,
- Vermont Department of Health
- Vermont Community Foundation
- Vermont 211
- United Ways of Vermont
- Capstone Community Action
- Scientific Games
- Mitzvah Fund-Mobile Animal Care
- Montpelier Alive
- Goodwill of Northern N.E.

## Spotlight: Local Leaders



The GMUW team worked with a local resident of Williamstown who was trying to get water to an area mobile home park with no water. In less than an hour we had over a pallet of water loaded onto her truck and delivered to the site with additional resource connections provided for individuals and animals that have become sick due to contaminated water. Thank you Montpelier Alive for sharing your water resource, and special thanks to Danyelle for taking the lead in making sure her community is connected.



## WANT TO HELP?

LEARN MORE OR DONATE HERE:

